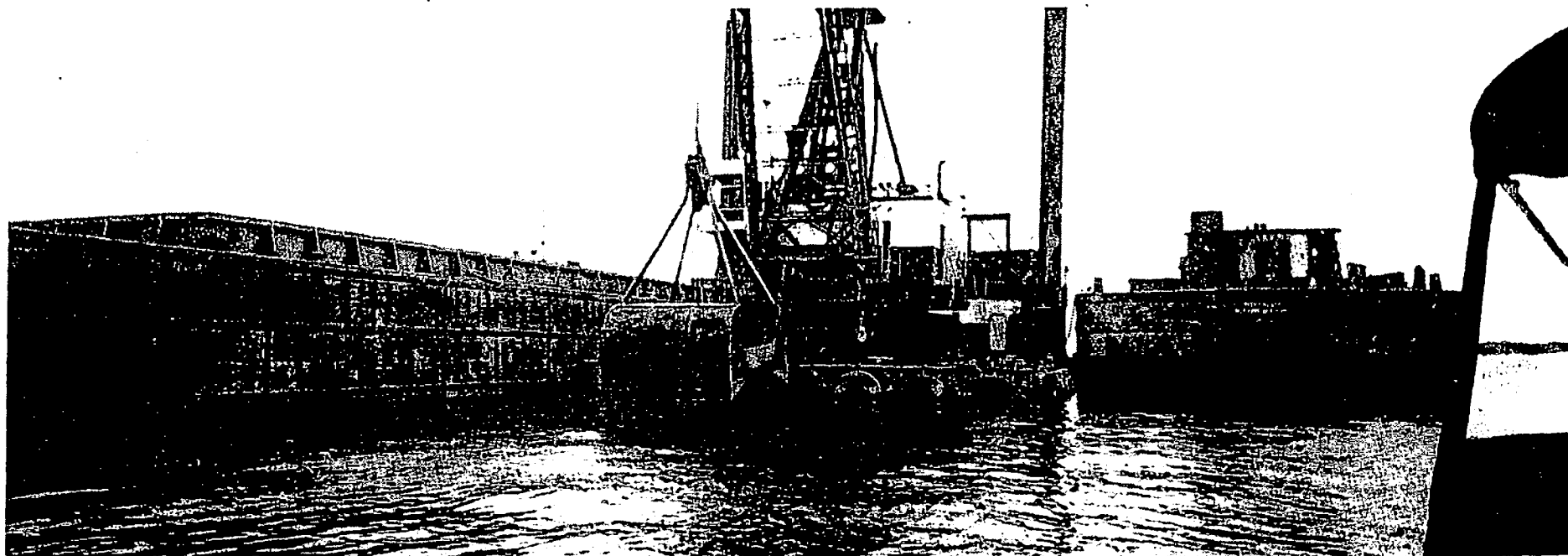


## Work Continues at the Dredging Site in Duxbury Bay



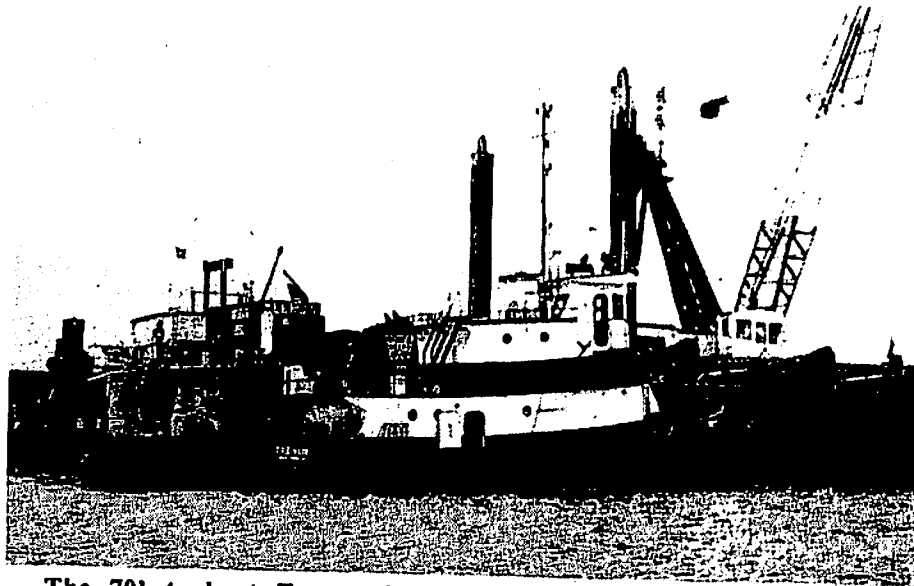
The 2 scows, crane barge, and tug cover an acre and will remove approximately 250,000 cubic yards of material from Duxbury's 8-foot-deep channel and anchorage.

*Photos by Fran Nichols*

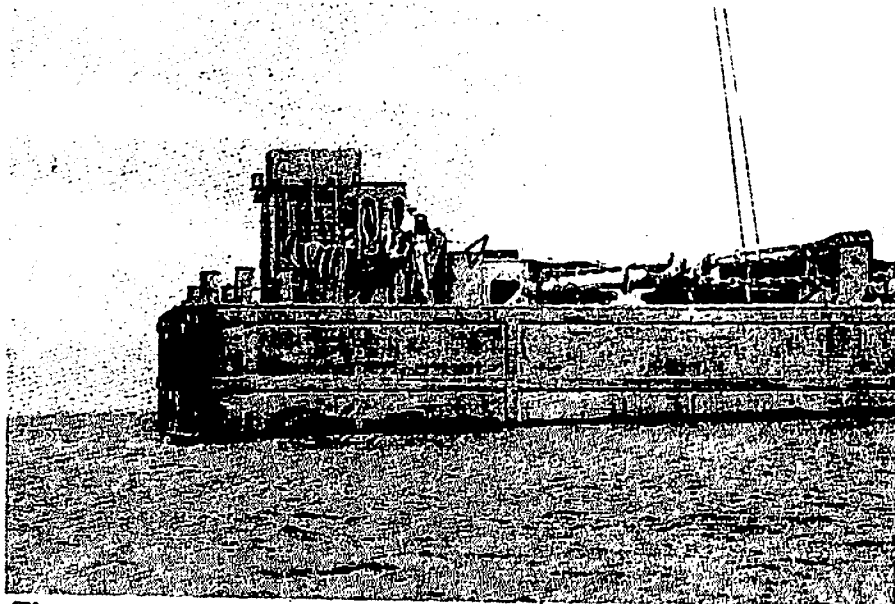
*Duxbury Bay*

Duxbury Clipper, Wednesday, August 28, 1996

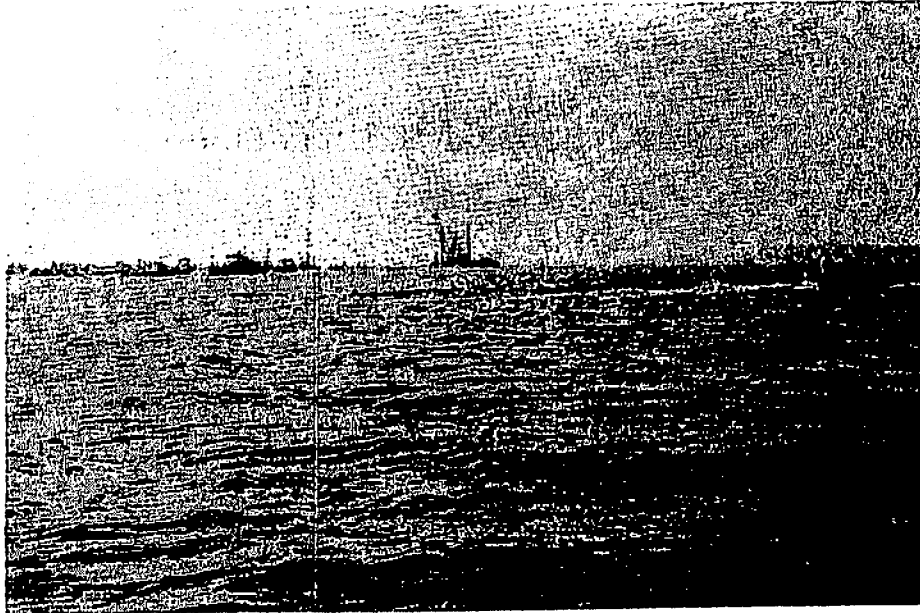
114



The 70' tugboat *Trevor* is shown next to the 150' crane. The U.S. Army Corps of Engineers recently awarded the Town of Duxbury a \$1,872,500 contract for the dredging of the channel and anchorage in Duxbury Bay.



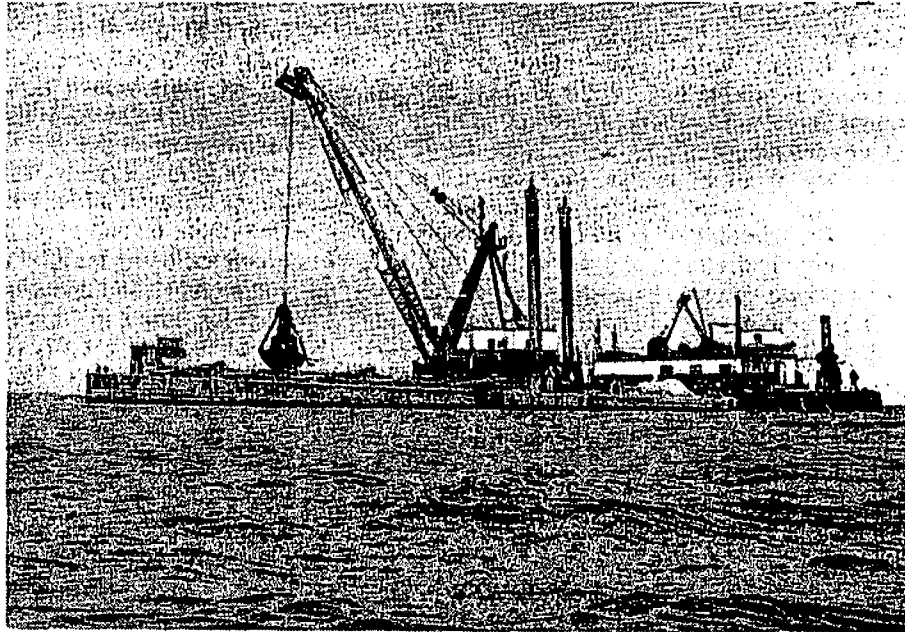
The scow gets lower and lower in the water as the load of material increases.



The pathway through the basin has been cleared to allow the dredge to work without damage to boats or moorings. Some boat owners opted to haul out for the season. Some found temporary moorings in the basin or in other anchorages such as Howland's Landing.



Barney Davis of Bayside Marine relocates a mooring as a huge portion of the Duxbury Yacht Basin is cleared of boats for the dredging process.



The 150' crane operating 24 hours a day by Weeks Marine of Camden, NJ works to remove silt from the channel.



Shown aboard the Duxbury Harbormaster's boat during a trip to the dredging site are, (l-r): Town Manager Rocco Longo, Construction Representative/Inspector Diving Supervisor Scott Leonard of the Waltham office of the US Army Corps of Engineers, and Duxbury Harbormaster Don Beers.